

NBWT FIXED PLANT PLATFORMS

Date: 2018

Client: Rio Tinto

Value: \$1.25m

Location: Brockman/Nammuldi

SCOPE DESCRIPTION

The Scope of Work includes the shop detailing, supply, fabrication, testing, surface treatment, delivery, and installation of structural steelwork platforms. There are 4 scopes of work, to be performed at the following locations: 1. Secondary Crushing Bin 2. Dry Screening Bin 3. CV2104 Transfer Chute 4. Reclaimer RC2701 Access Platform KBSS were engaged to undertake the Scope of Work for this project to fabricate and install permanent access platforms at the Nammuldi Below Water Table (NBWT) Fixed Plant as outlined below. Site Works are classified as High Risk (Class III) and include management of Critical Risks including but not limited to Fall from Height and Lifting Operations. These Works are continuous improvement initiatives to eliminate the need for temporary scaffold currently used for personnel maintenance access to equipment during Plant Shutdowns. Operators and maintainers have identified various location within the NBWT Fixed Plant requiring permanent access platforms to be installed for compliance with either the RTIO C4 -Working at Heights standard or "Ladders, stairs, Walkways, Service Platforms and Scaffolding Work Practice



Scope of Works

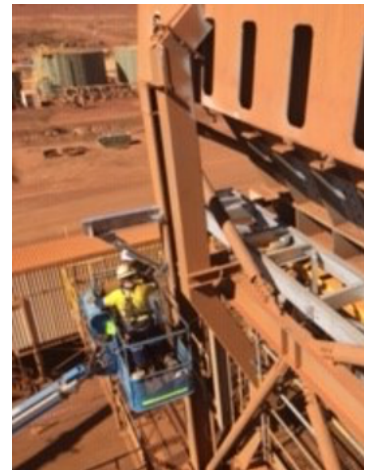
- The fabrication, delivery, and installation of the platforms
- The supply and mobilisation of all labour, materials, plant, equipment, ancillary items, site vehicles and temporary services to complete the works.
- The supply of off-loading, handling, storage, protection and security of materials and equipment at site.
- The supply of all equipment and items required to complete the Works that are not specifically listed herein as Company supplied e.g. radios and personal isolation locks.
- The supply of transportation for personnel between the Nammuldi Camp and the work sites each day.
- The provision for the location and protection of all on-site services within the works including but not limited to the electrical cables previously installed.
- The provision of a master set of Drawings and mark up any deviations made from the Drawings as the Work is constructed. On Completion of the Works the Contractor must submit the relevant 'as built' Drawings to the Company Representative for approval.
- Quality Assurance documentation, including but not limited to o Inspection and Test Plans (ITP) o Weld Test Results o Manufacturer's Data Report (MDR)
- Clean-up of the work sites, laydown area(s) and demobilisation of all personnel and equipment from site

Project Specifics:

- All works completed on time and on budget
- 12-hour 2 Week swings (6 Swings Total) to complete project.
- Zero incidents or near misses.
- All works were captured by KBSS QA/QC.
- All works was completed using Karratha local labour.

Engaged Recourses:

- specialised welding
- All SMP services
- Craneage
- Civils
- Working in with Shutdown requirements
- NDT
- Equipment hires



RioTinto